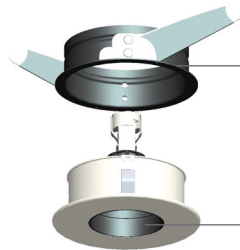
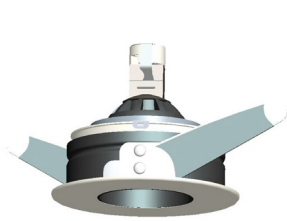


SNIPER 92

IP20 IP44 ADJ. ↙ MR16 0-10V DIM ▶



Pre-installed housing. Lamp body install from the bottom for easy maintenance

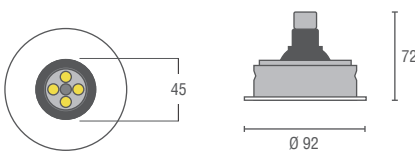
Deep recessed lamp position for glare-free illumination

92mm pinhole downlight
 Mounting method : recessed ceiling mounted
 Material : die cast aluminium housing and trim
 Standard finishes : matt white / matt black / polished chrome / dark chrome / brushed bronze
 IP Rating : IP20 / IP44
 Accessories : clear glass / frosted glass / honeycomb louvre
 Customized RAL upon request.
 Dimmable driver available upon request.
 Emergency kit available upon request.



SNIPER 92

Non-adjustable.
 Completed with Gu5.3 lamp base for low voltage halogen lamp or led lamp.
 Electronic transformer is not included.
 Dimension in mm : Ø92 x 72 ; Cut Hole : Ø78

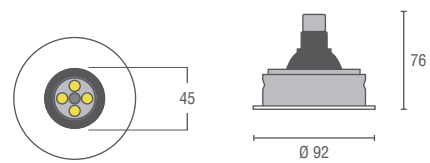


LOW VOLTAGE HALOGEN / LED LAMP

Lamp Base	Voltage
GU5.3	12V

SNIPER 92a

Rotating 360° and adjustable 35° tilting angle.
 Completed with Gu5.3 lamp base for low voltage halogen lamp or led lamp.
 Electronic transformer is not included.
 Dimension in mm : Ø92 x 76 ; Cut Hole : Ø78



LOW VOLTAGE HALOGEN / LED LAMP

Lamp Base	Voltage
GU5.3	12V

Note : Housing with Gu5.3 socket can be replaced by COB led module on request