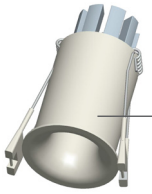
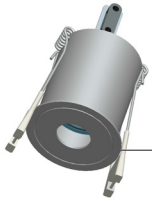


IP20 IP44  LED MR11 0-10V DIM 



Round deep recessed design  
delivering outstanding performance



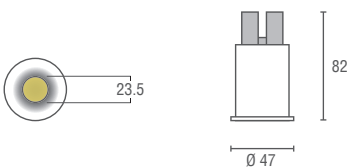
Low glare pinhole, removable front  
trim for easy maintenance

47mm Deep recessed downlight  
Mounting method : recessed ceiling mounted  
Material : die cast aluminium housing  
Standard finishes : matt white / matt black  
IP Rating : IP20 / IP44  
Accessories for MR11 version : clear glass / frosted glass / honeycomb louvre  
Customized RAL upon request.  
Dimmable driver available upon request.  
Emergency kit available upon request.



## PIPE

Non-adjustable.  
Completed with Cree / Lumileds replaceable COB LED module.  
Remote led driver.  
Dimension in mm : Ø47 x 82 ; Cut hole : Ø42



### CREE LED CRI>80 / CRI 90

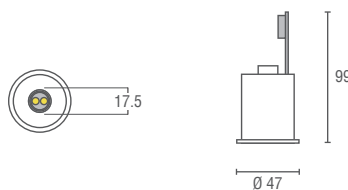
Wattage	Lumen	CCT	Beam Angle
5W	400lm	2700K	13°
		3000K	18°
		4000K	28°
		5000K	36°

### LUMILEDS LED CRI>80 / CRI 90

Wattage	Lumen	CCT	Beam Angle
5W	550lm	3000K	11°
		4000K	28°
		5000K	31°
		5700K	44°
		6500K	52°x12°

## PIPE.MR11

Non-adjustable.  
Completed with Gu4 lamp base for low voltage halogen lamp or led lamp.  
Electronic transformer is not included.  
Dimension in mm : Ø47 x 99 ; Cut hole : Ø42



### MR11 LOW VOLTAGE HALOGEN / LED LAMP

Lamp Base	Voltage
GU4	12V